

# Pre-Dissection Drawing Activity

## Pathway of Blood Through Heart

---

Health Science Technology

# Supplies:

---

- **3 sheets paper**
- **Pencil**
- **3 fine tip colored markers (blue, red, green)**
- **Optional: highlighter (pink or orange)**

The heart is a double pump.

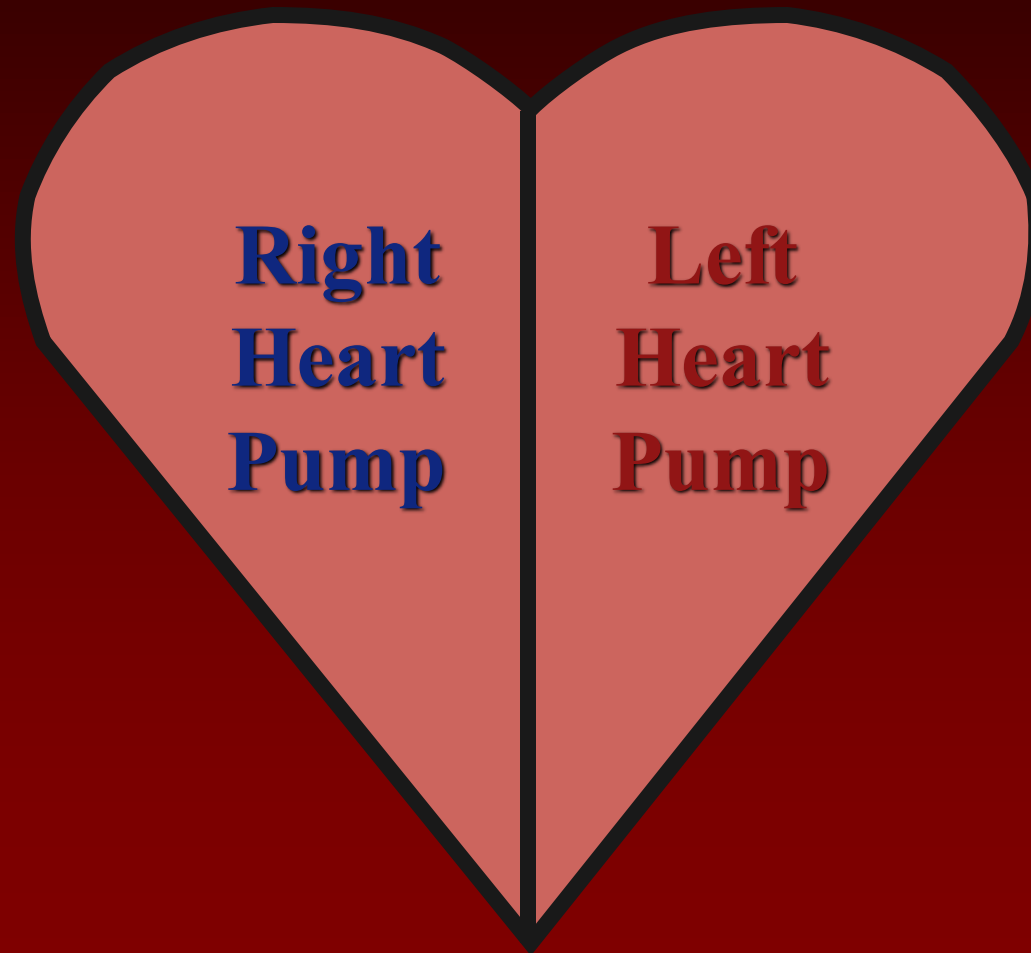
---



**Right  
Heart  
Pump**

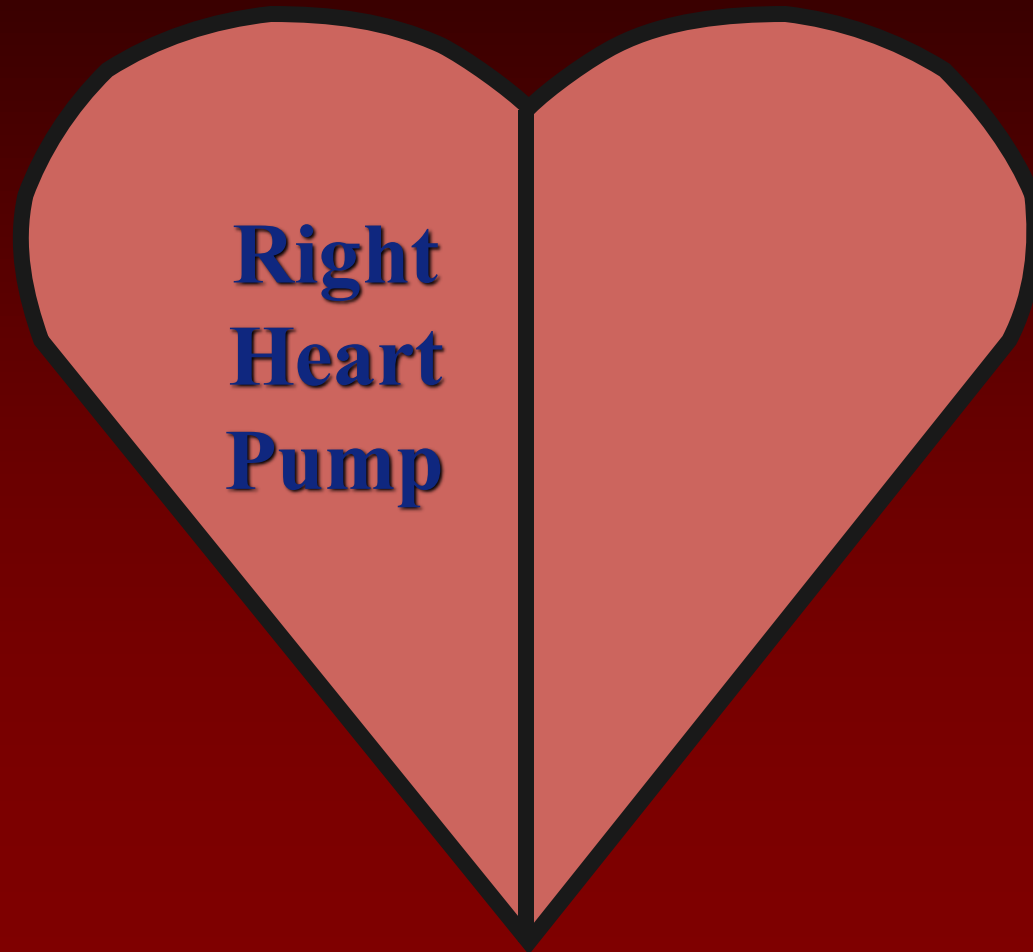
The heart is a double pump.

---



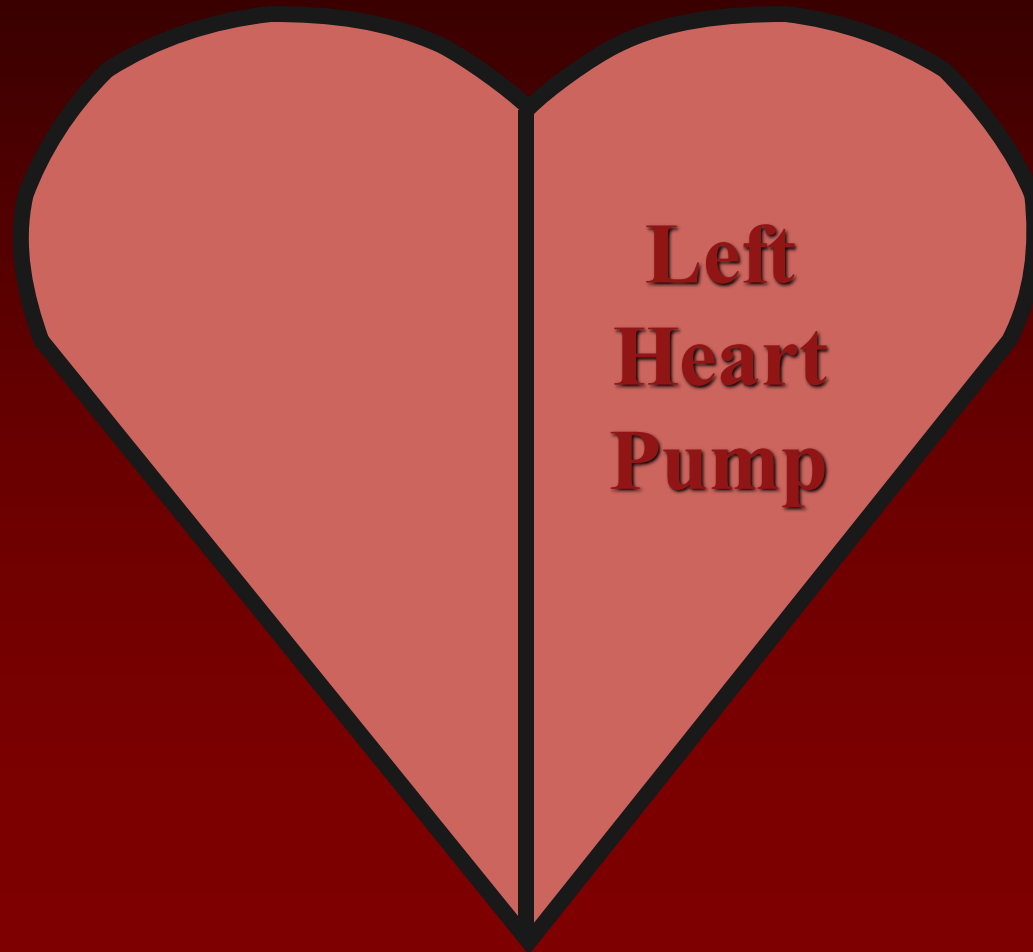
The right heart pumps venous (deoxygenated) blood.

---

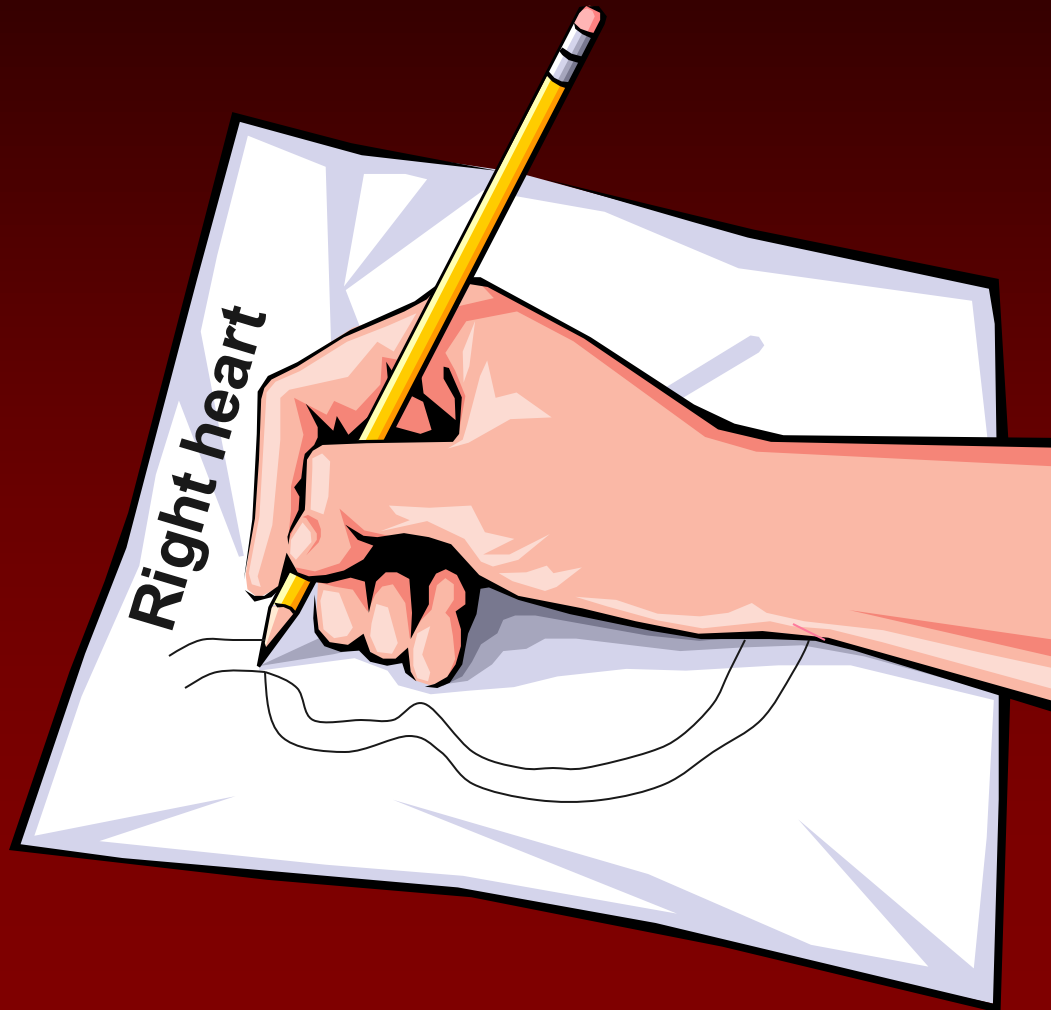


The left heart pumps arterial  
(oxygenated) blood.

---



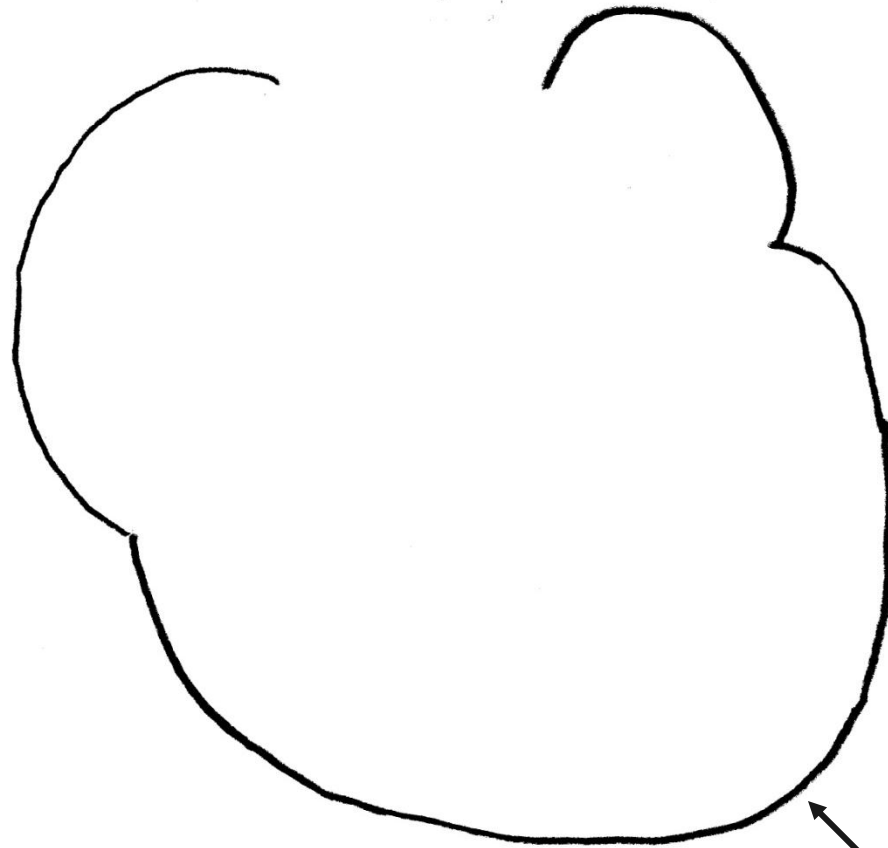
# Drawing the right heart.



# Step 1: Draw outline of heart.

Rt. side

Lt. side



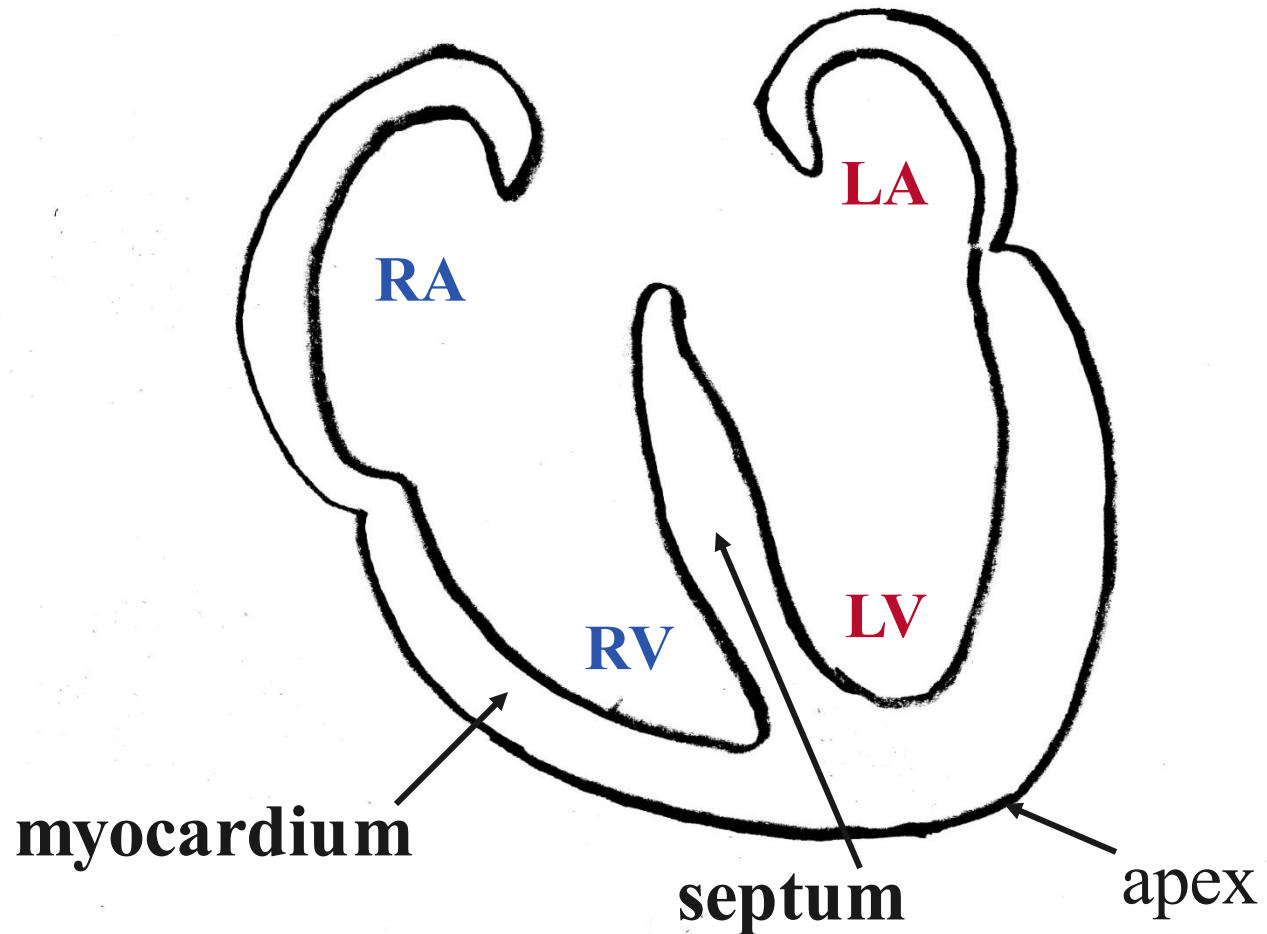
apex



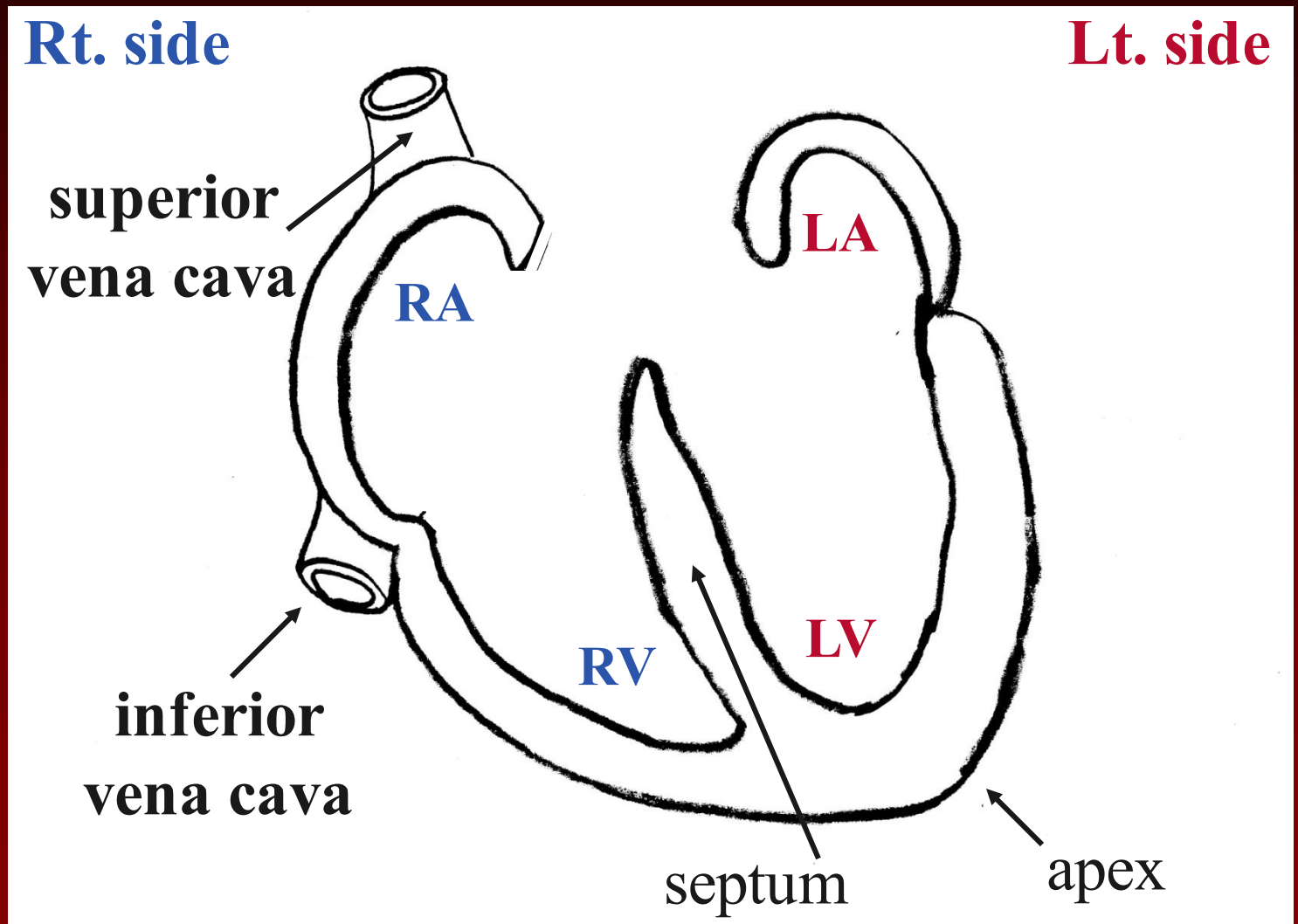
# Step 2: Draw myocardium & septum. Identify chambers.

Rt. side

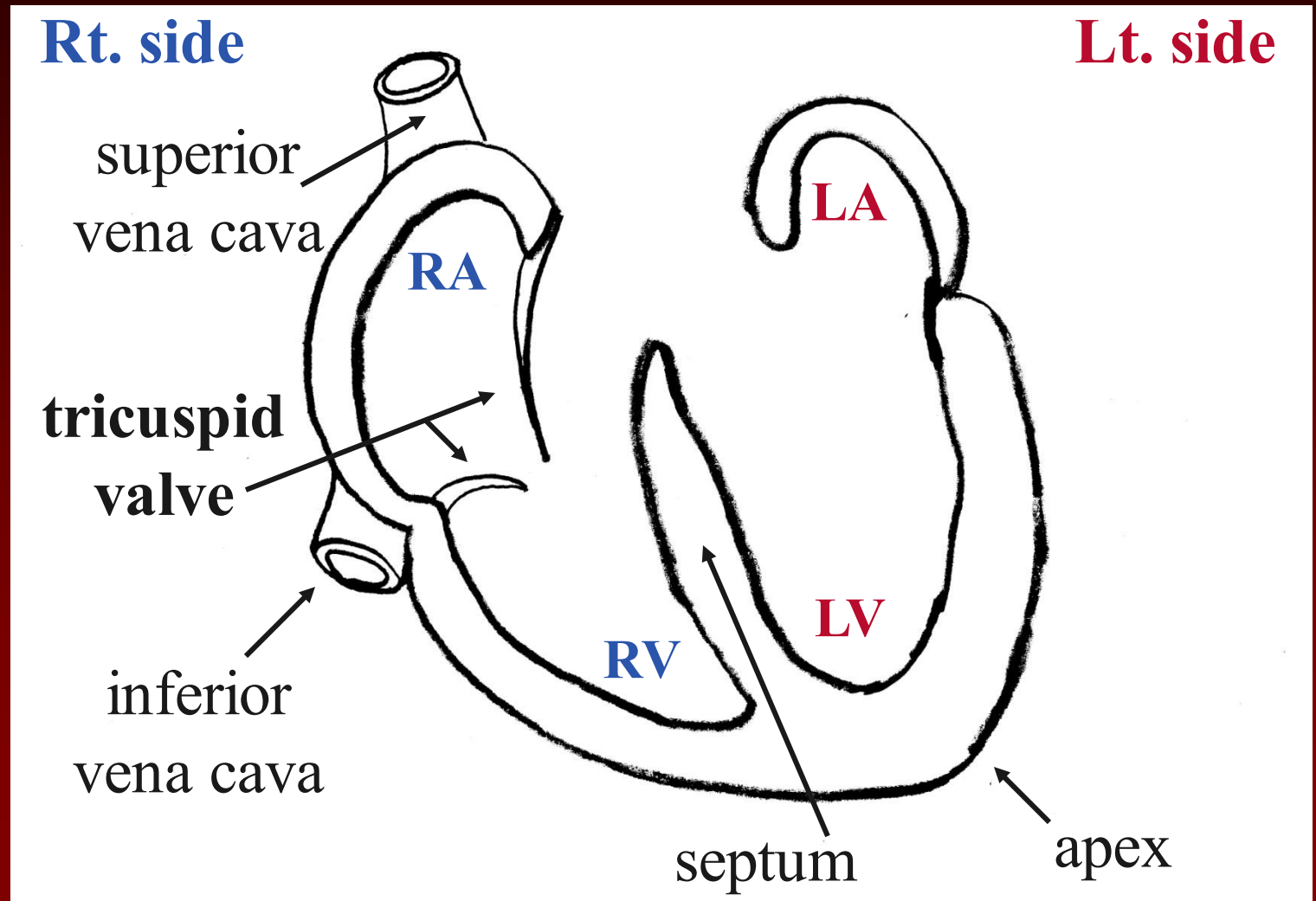
Lt. side



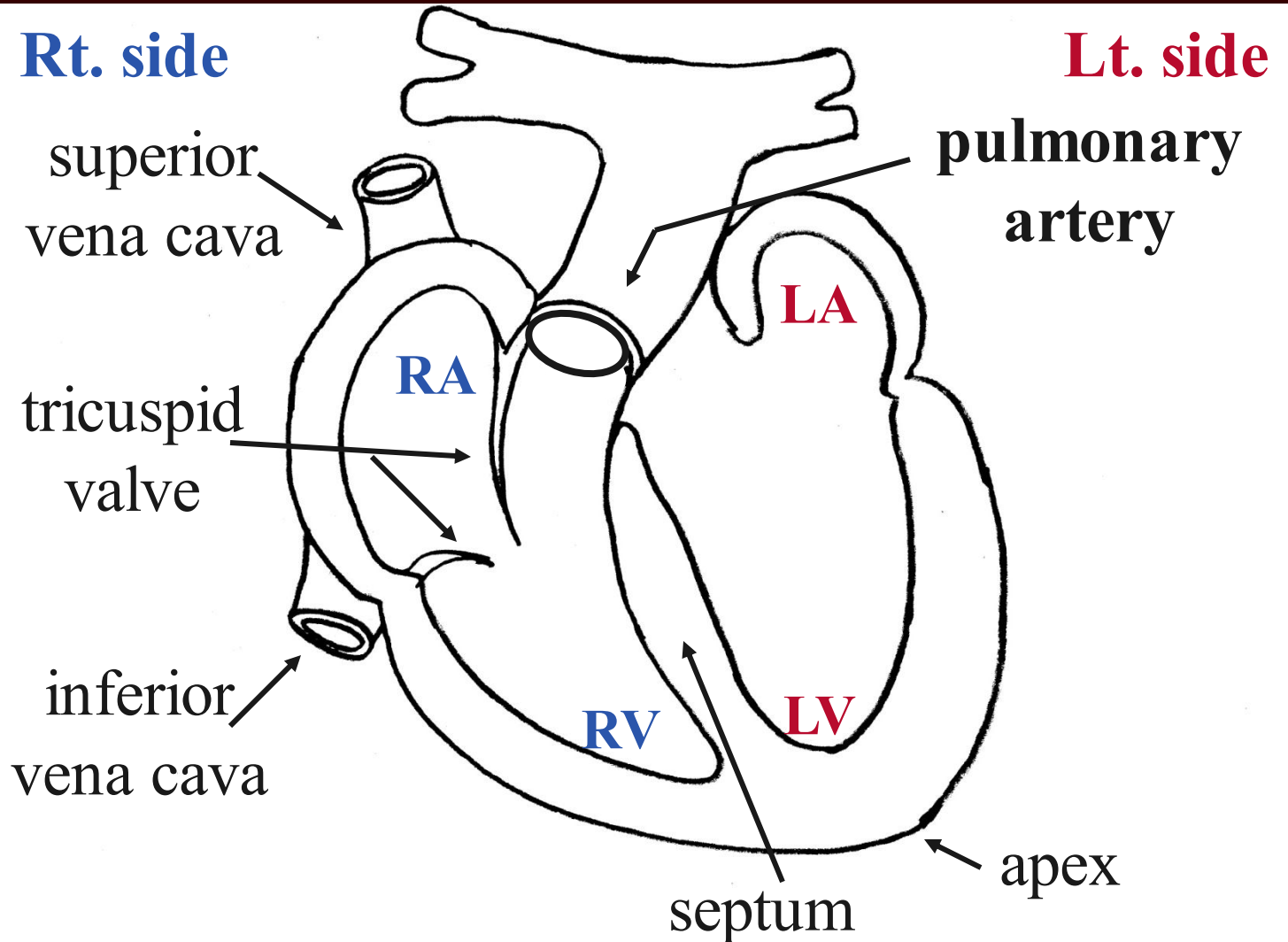
# Step 3: Draw both superior & inferior vena cava.



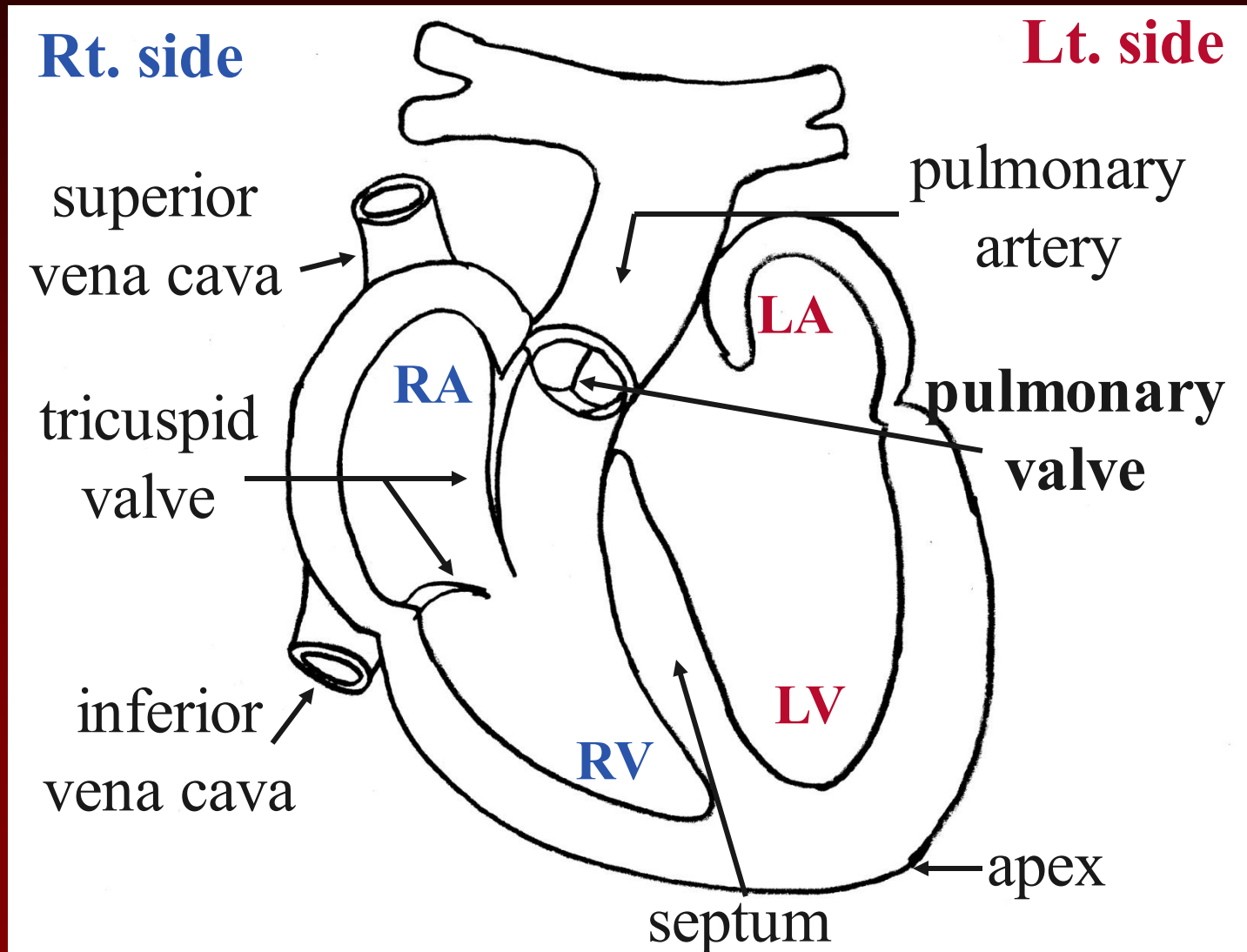
# Step 4: Draw tricuspid valve.



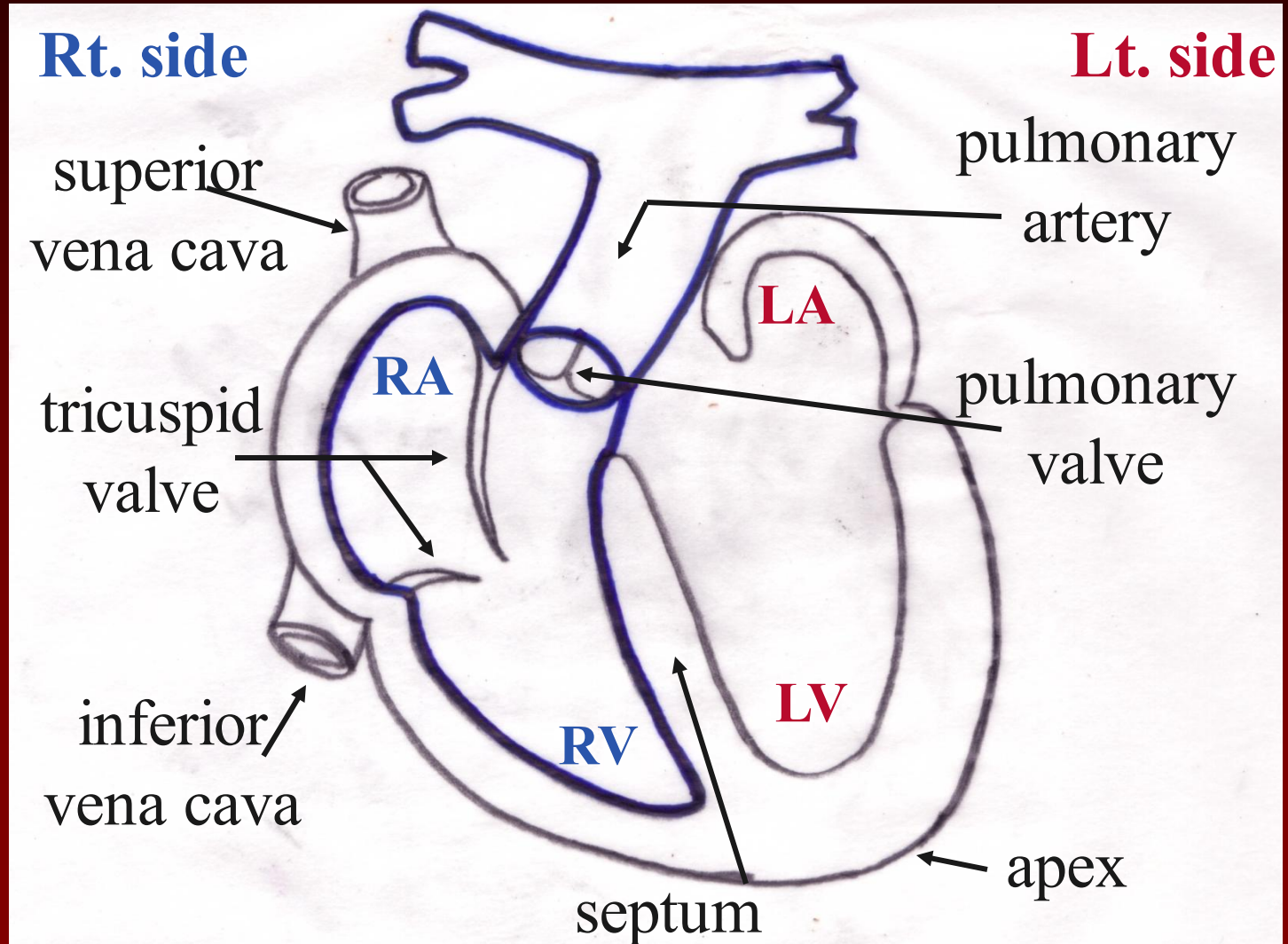
# Step 5: Draw pulmonary artery.



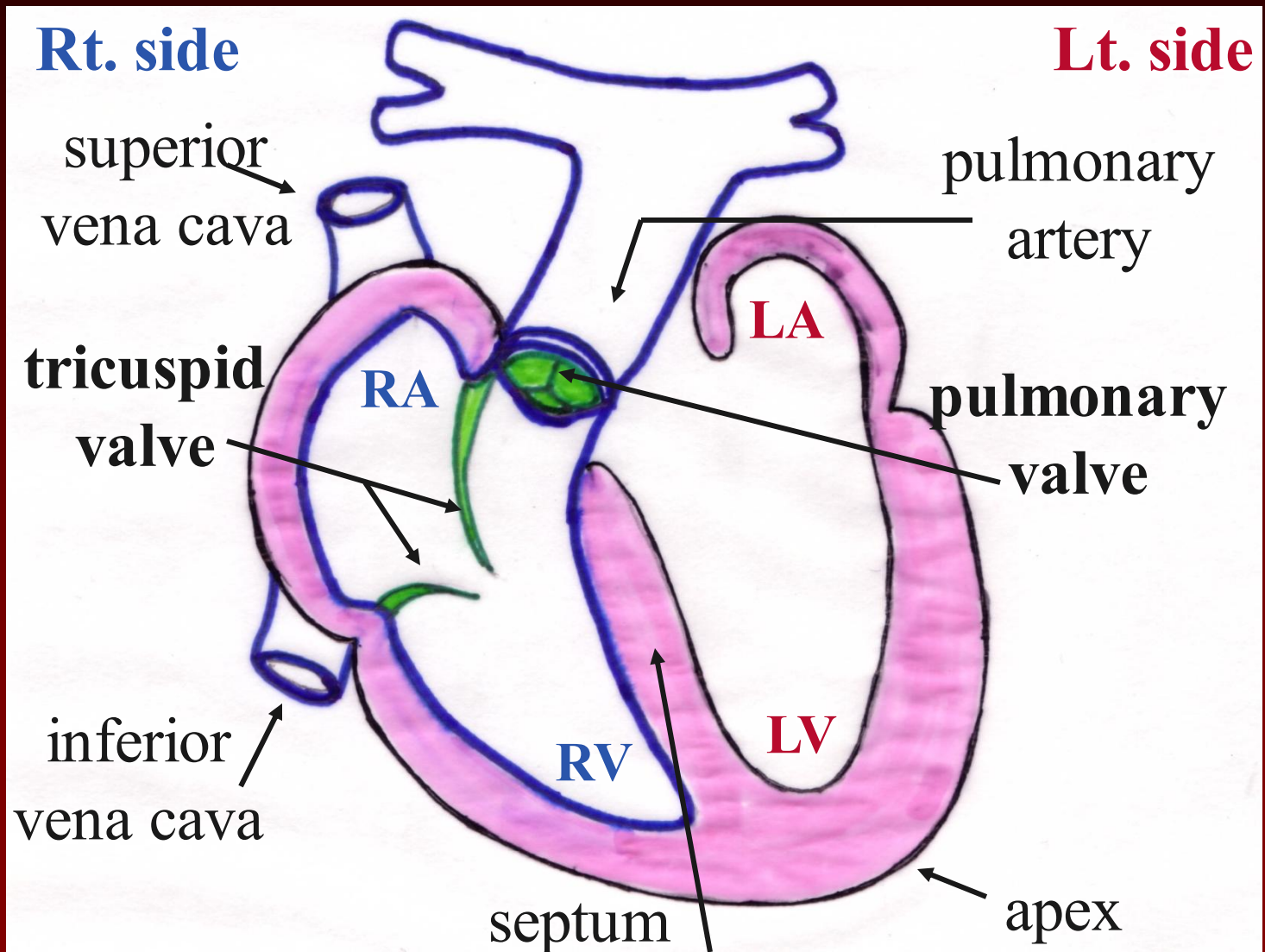
# Step 6: Draw pulmonary valve.



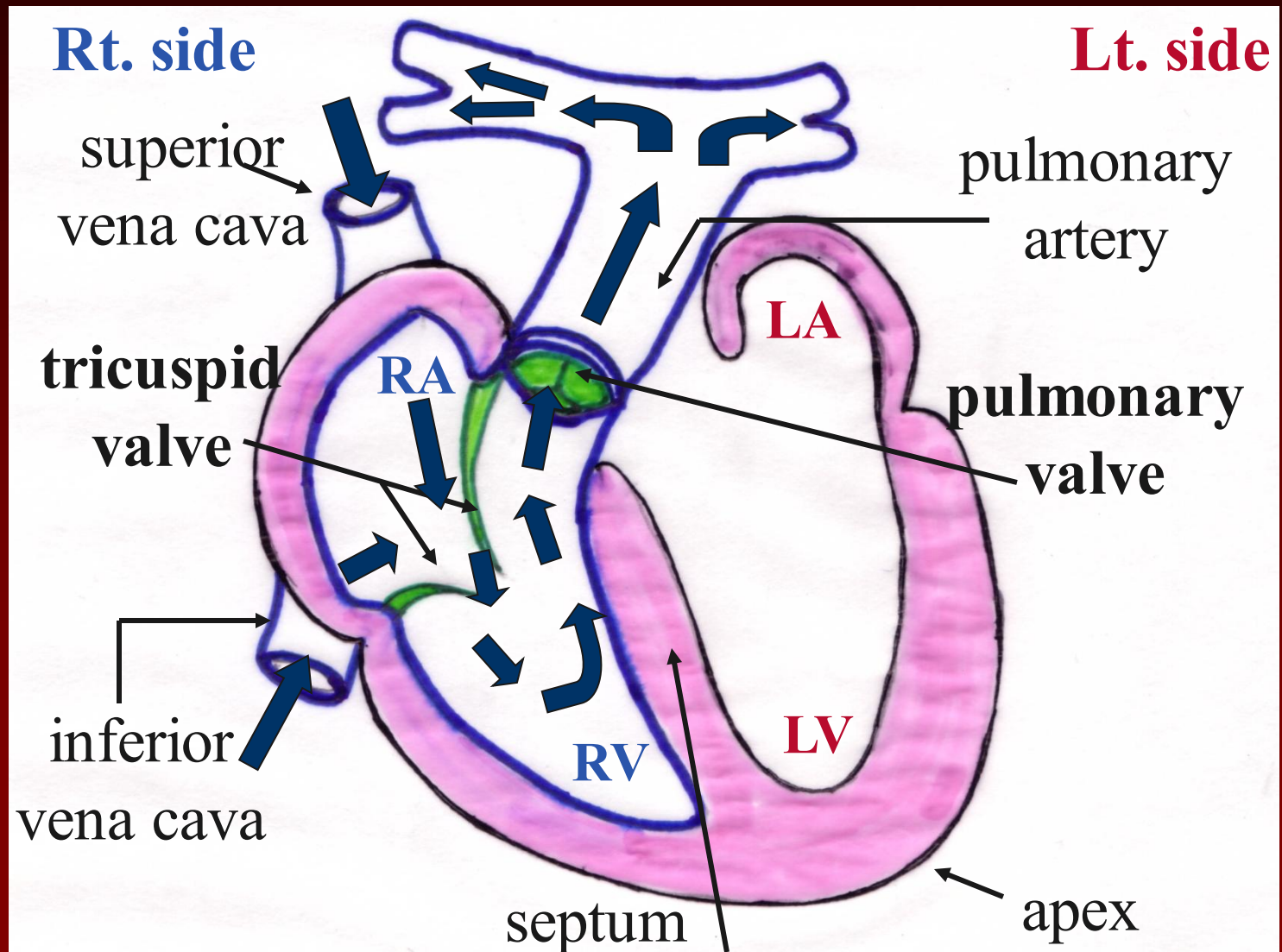
# Step 7: Outline great vessels & chambers with blue marker.



# Step 8: Outline valves in green. Color septum & myocardium in pink.

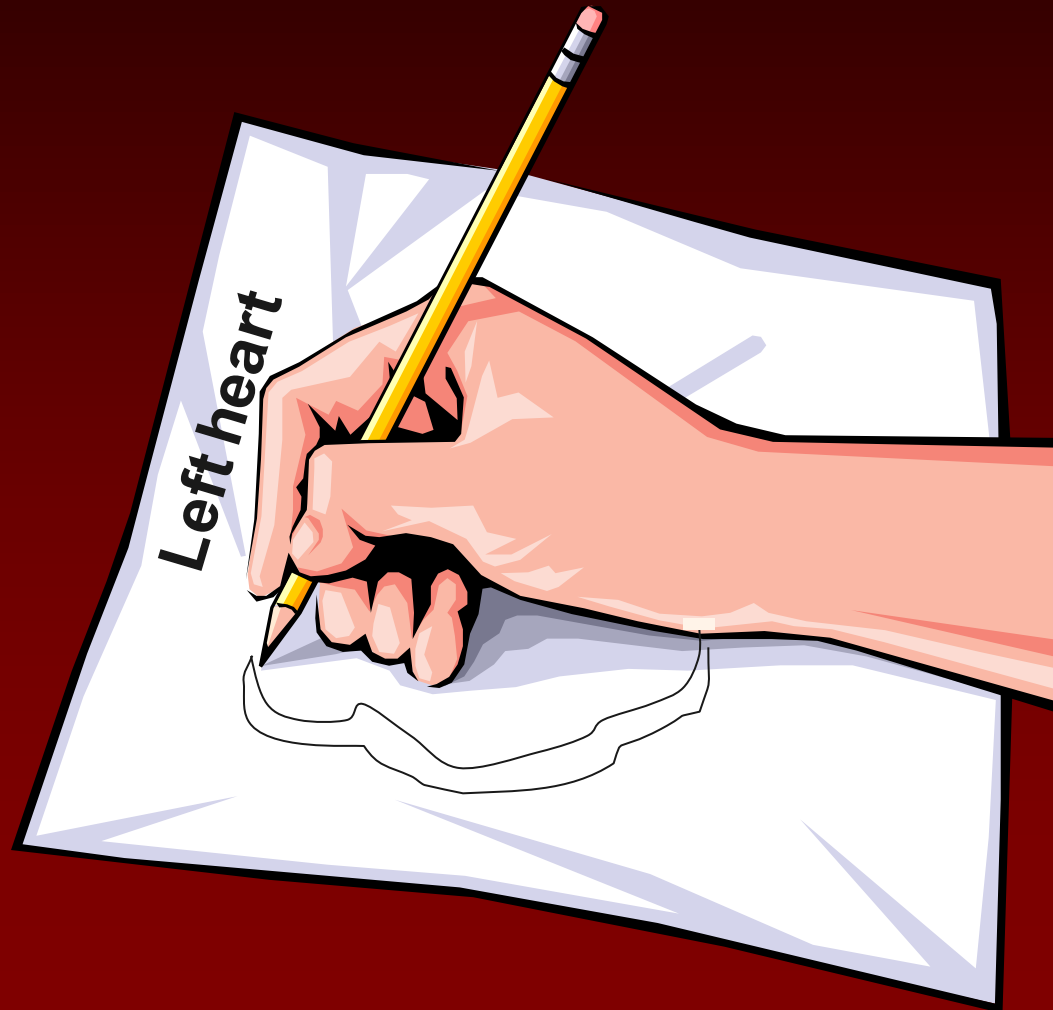


# Step 9: Indicate pathway of blood through right heart with arrows.





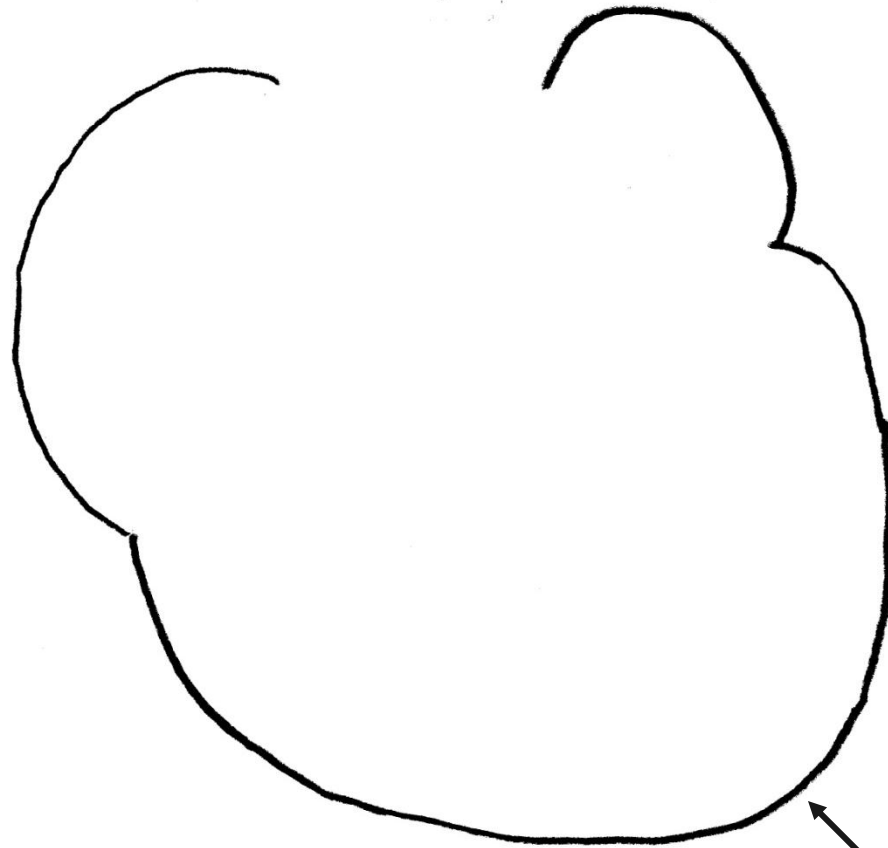
# Drawing the left heart.



# Step 1: Draw outline of heart.

Rt. side

Lt. side

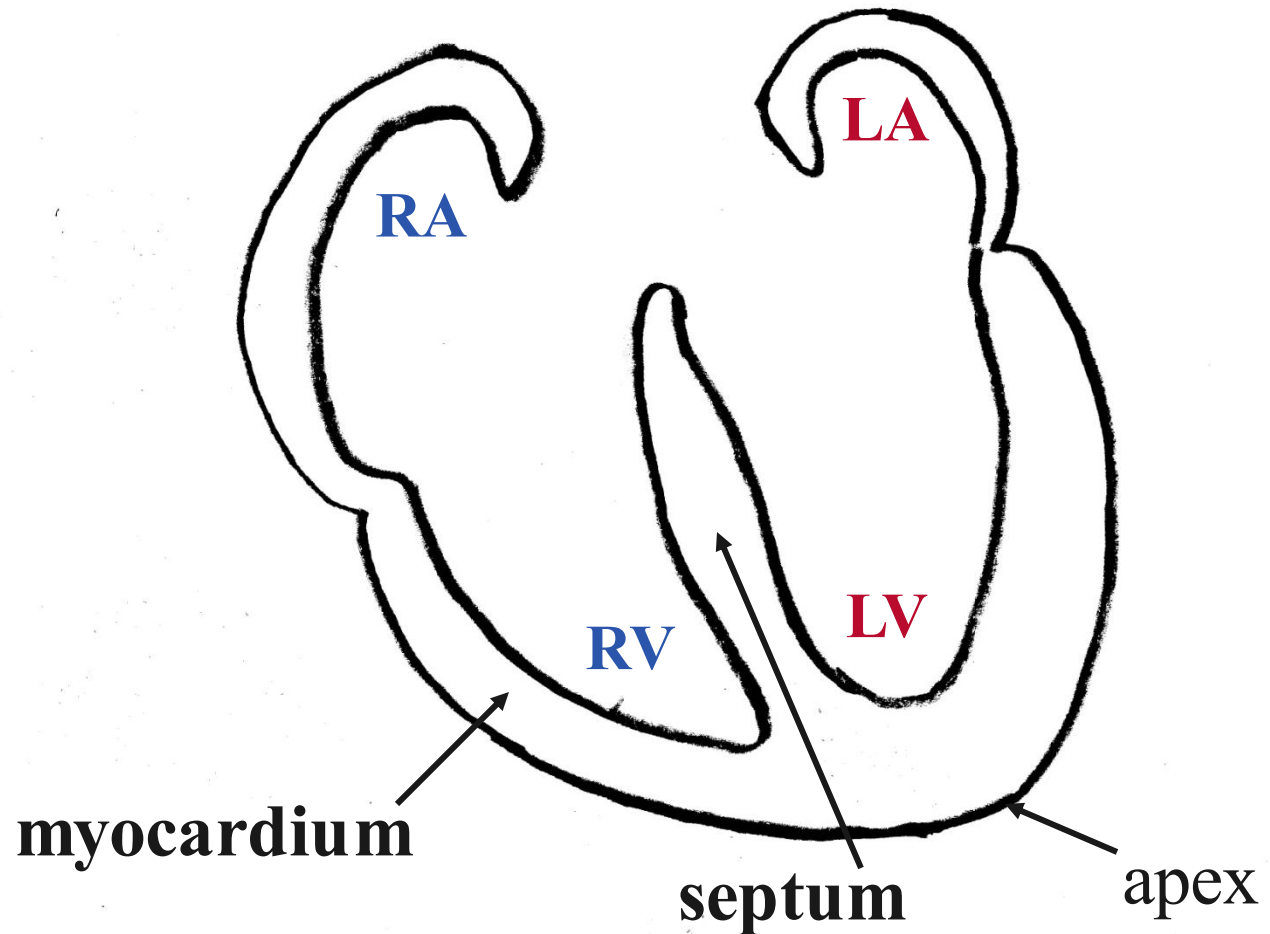


apex

# Step 2: Draw the myocardium & septum.

Rt. side

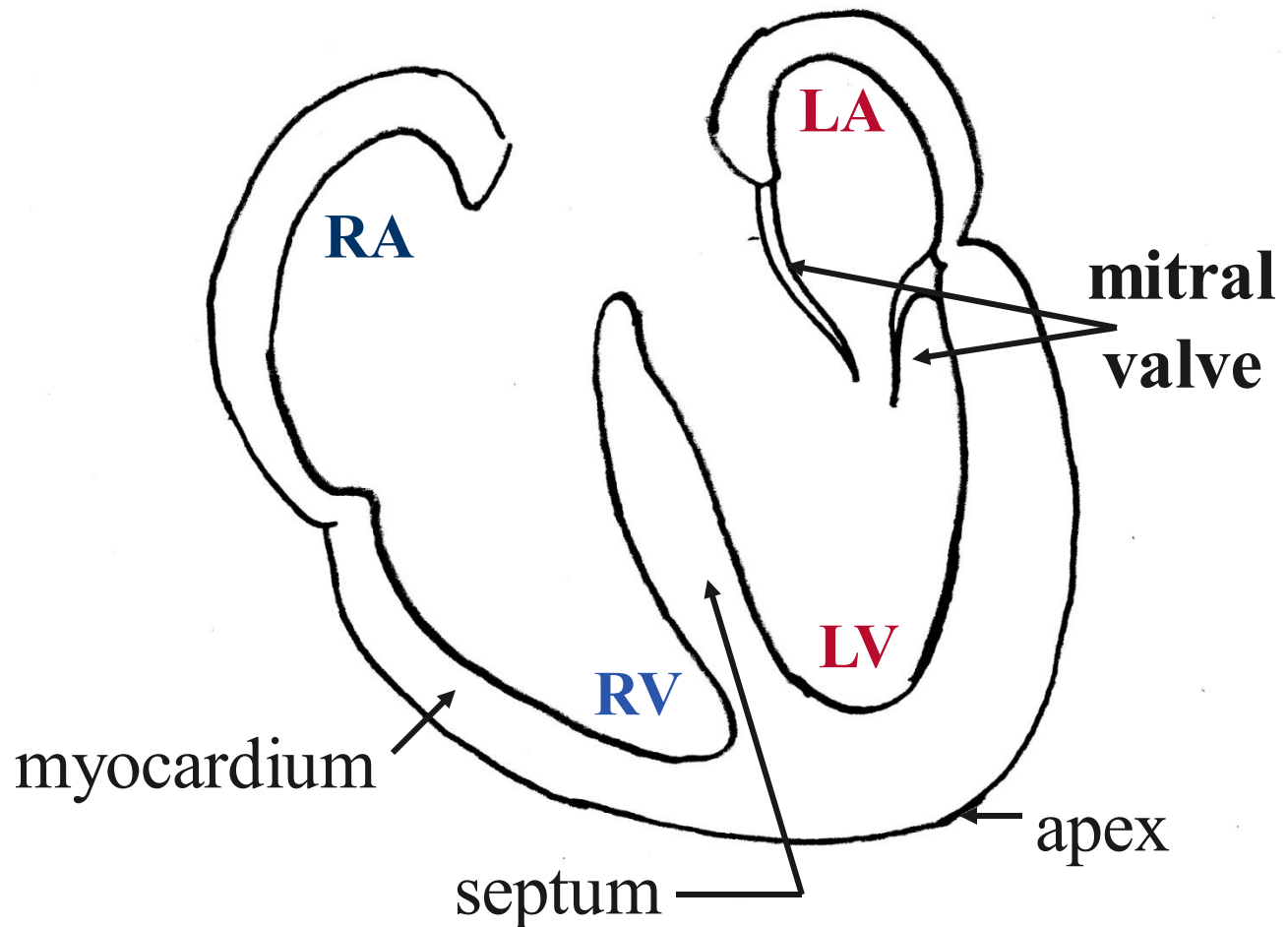
Lt. side



# Step 3: Draw mitral valve.

Rt. side

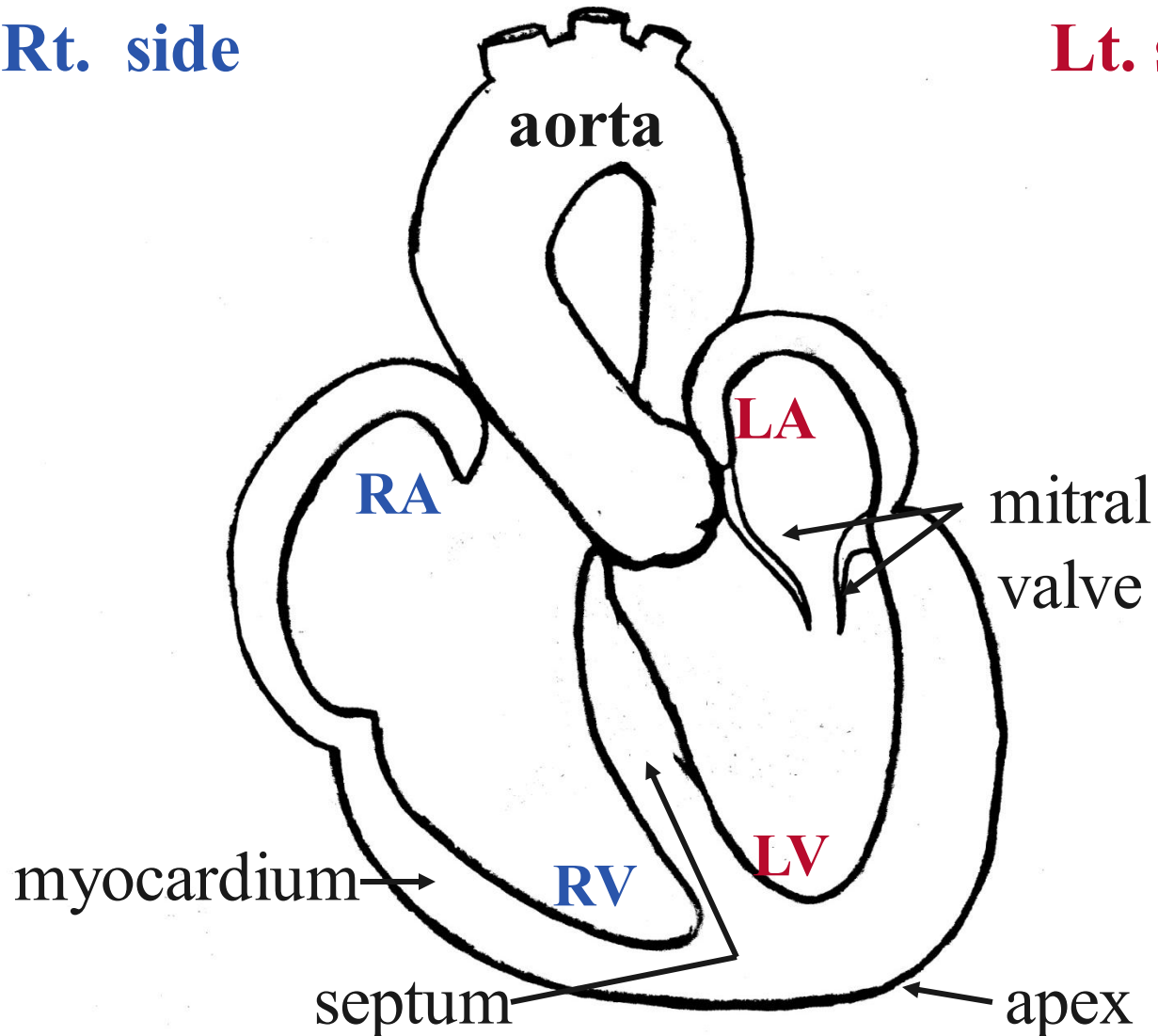
Lt. side



# Step 4: Draw aorta.

Rt. side

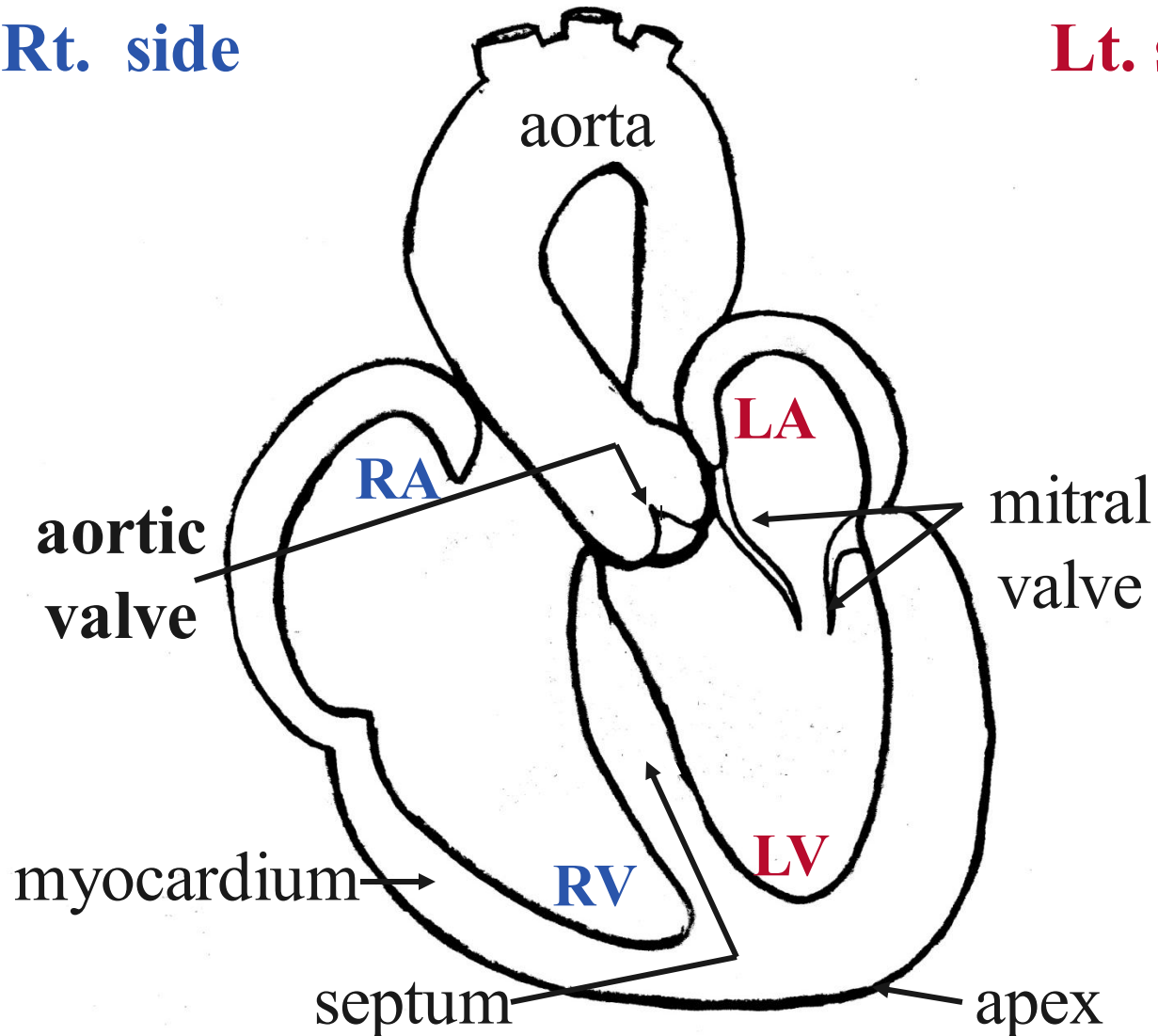
Lt. side



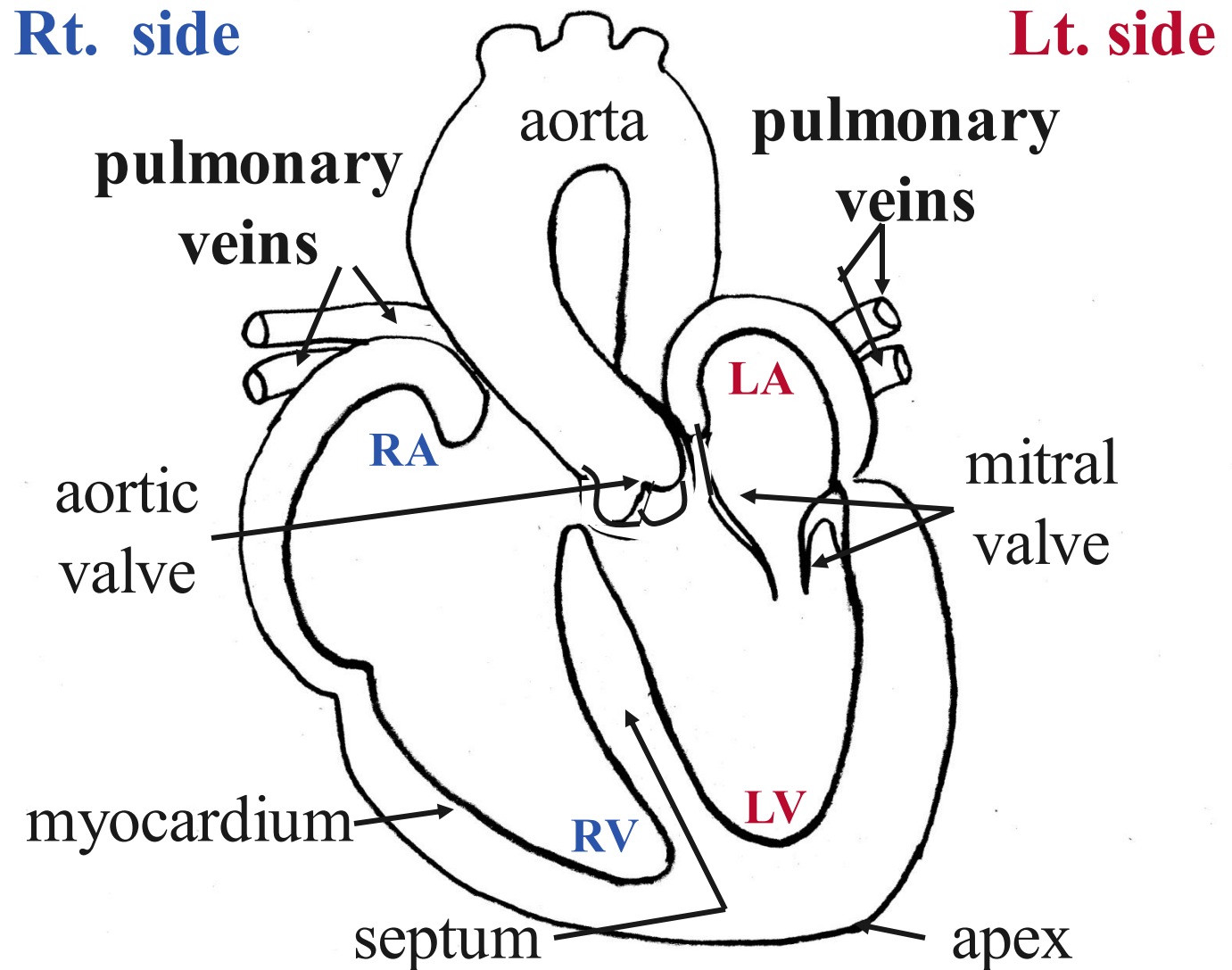
# Step 5: Draw aortic valve.

Rt. side

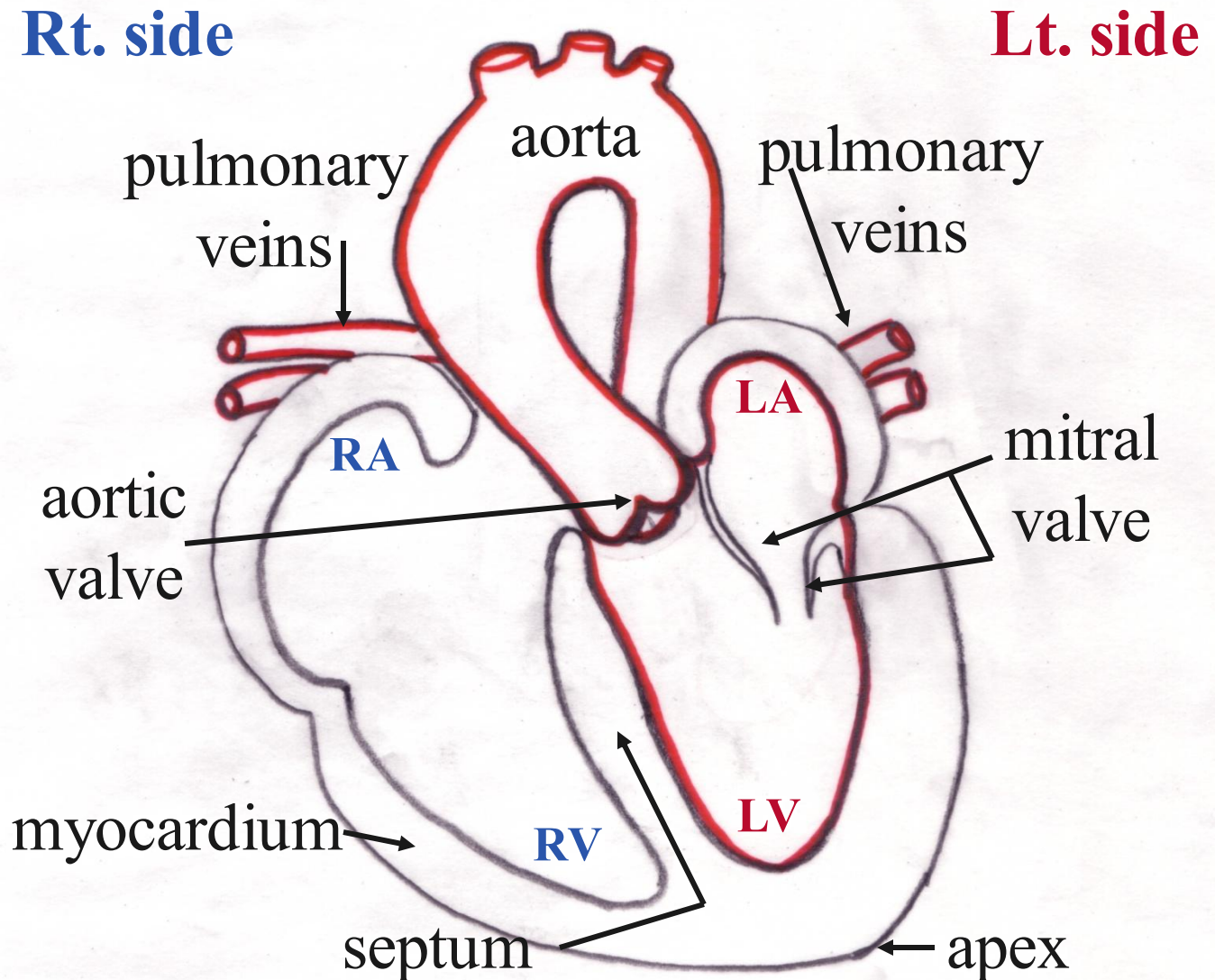
Lt. side



# Step 6: Draw pulmonary veins.



# Step 7: Outline great vessels & chambers with red marker.

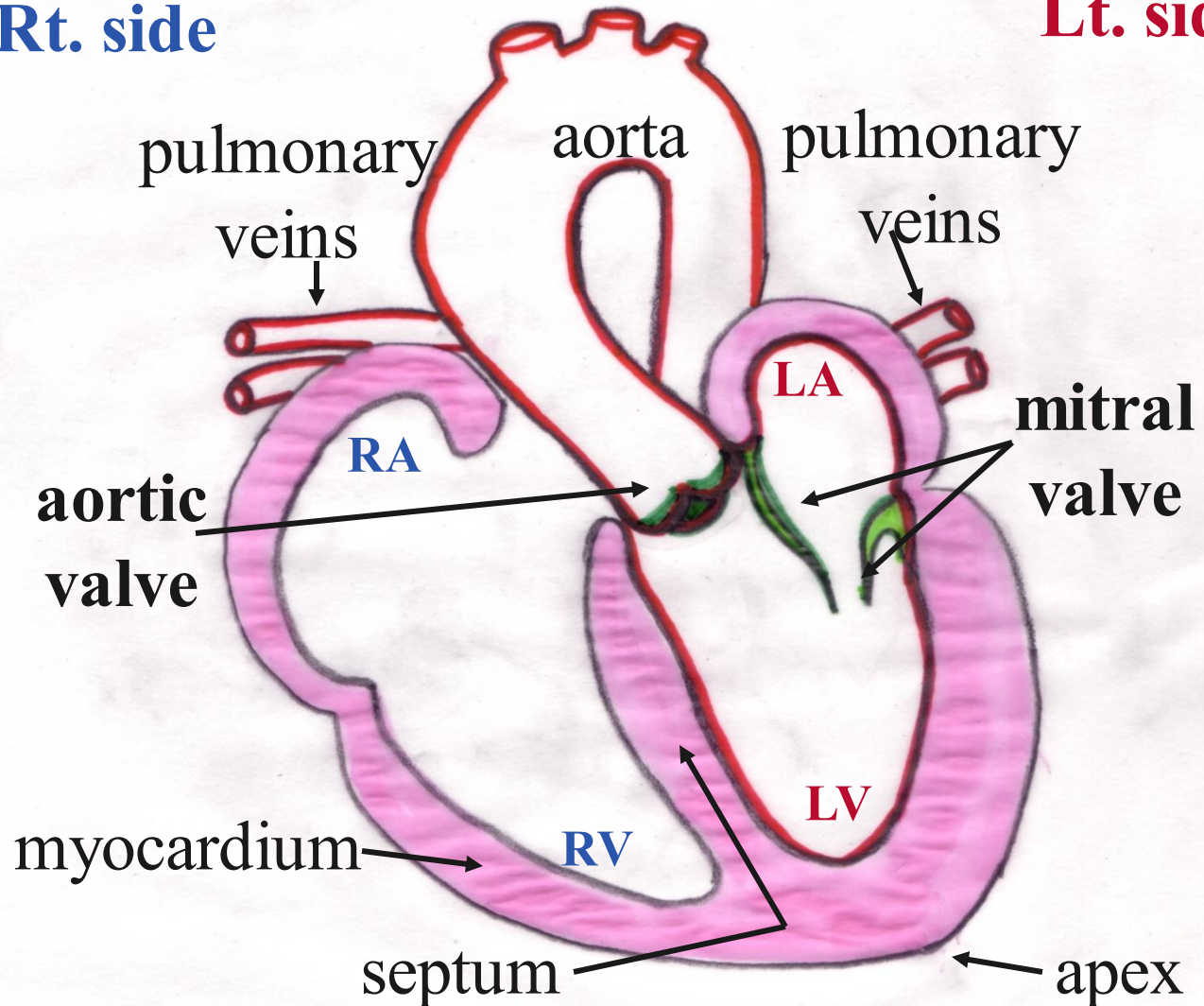




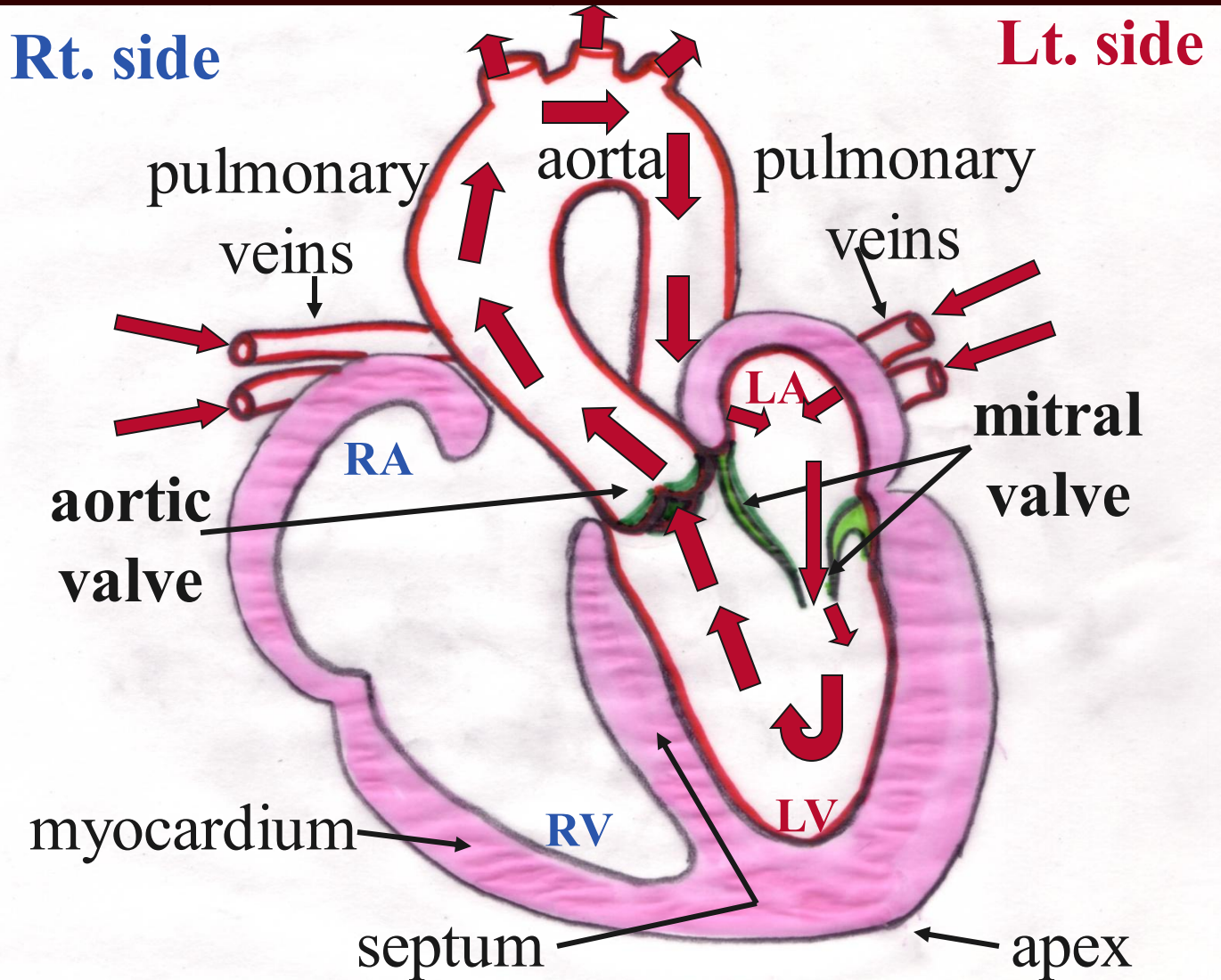
# Step 7: Outline valves in green. Color septum & myocardium in pink.

Rt. side

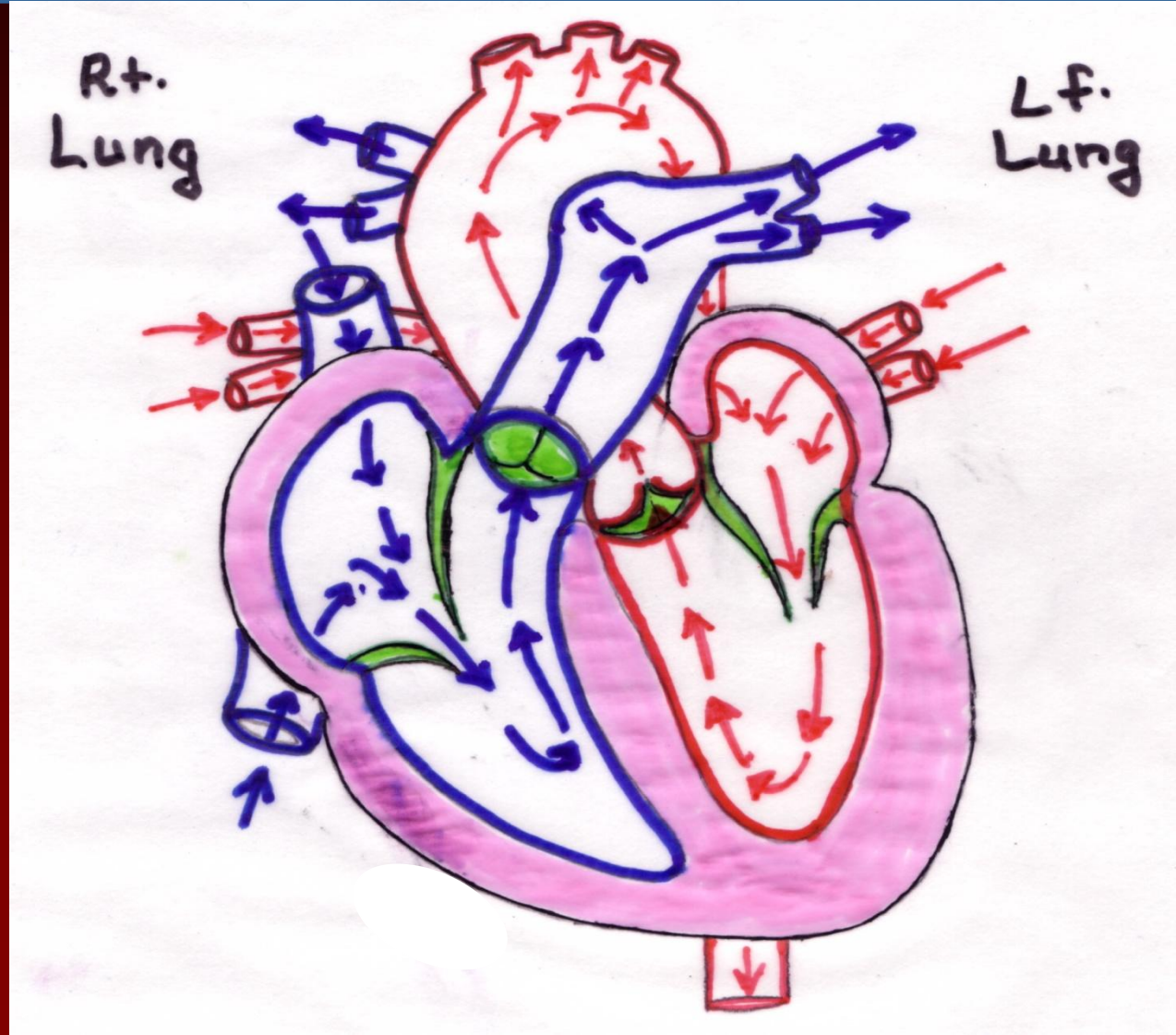
Lt. side



# Step 7: Indicate pathway of blood through left heart with arrows.



# Final Step: Draw entire heart.



# Cool "Heart Sites"

**NOVA—*Cut to the Heart:***

<http://www.pbs.org/wgbh/nova/heart/heartmap.html>

***Go With the Flow* (Awesome site that includes lesson plans)**

<http://www.smm.org/heart/lessons/lesson6.thm>

**Virtual Hospital's Cardiac Catheterization:  
Introduction**

<http://www.vh.org/Patients/IHB/IntMed/Cardio/Cath/Info.html>